

GEARLESS ELEVATORS
LUXEN



The LUXEN passenger elevator, equipped with gearless traction machine, provides you with cozy and quick service by making lowest noises, causing least vibrations and occupying minimum spaces.

LUXEN YOUR WISE CHOICE



005. LUXEN'S ECONOMY 007. LUXEN'S HARMONY 009. LUXEN'S SERVICE 010. CAR DESIGN
016. ENTRANCE DESIGN 018. CEILING 019. HANDRAIL & FLOORING 020. CAR OPERATING
PANELS/POSITION INDICATORS/HALL BUTTON/STOP LIGHTING 021. ETCHING
PATTERNS/PAINT COLOR 022. HOISYWARY & MACHINE ROOM PLAN 023. STANDARD
DIMENSIONS & REACKTIONS 024. ENTRANCE DESIGN 026. FEATURES DESIGN

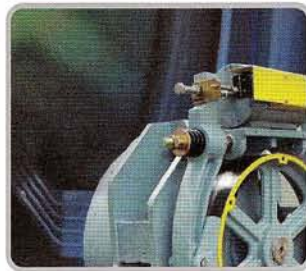


High Performance versus Price Ratio Elevator

LUXEN is equipped with permanent magnetic traction machine. LUXEN minimizes remarkably the energy consumption by using energy-saving control system.



high-efficiency



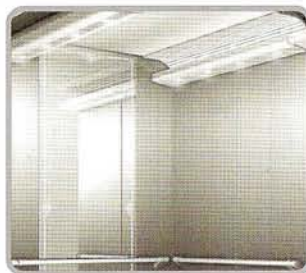
► Gearless Traction Machine

LUXEN brings up energy efficiency by using high-efficiency energy-saving permanent magnetic traction machine.



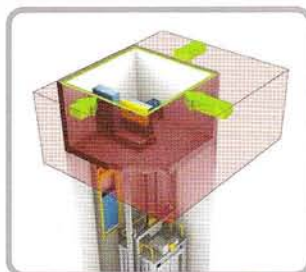
► Precise Control

LUXEN is equipped with VVVF through which voltage and frequency can be changed so as to control precisely.



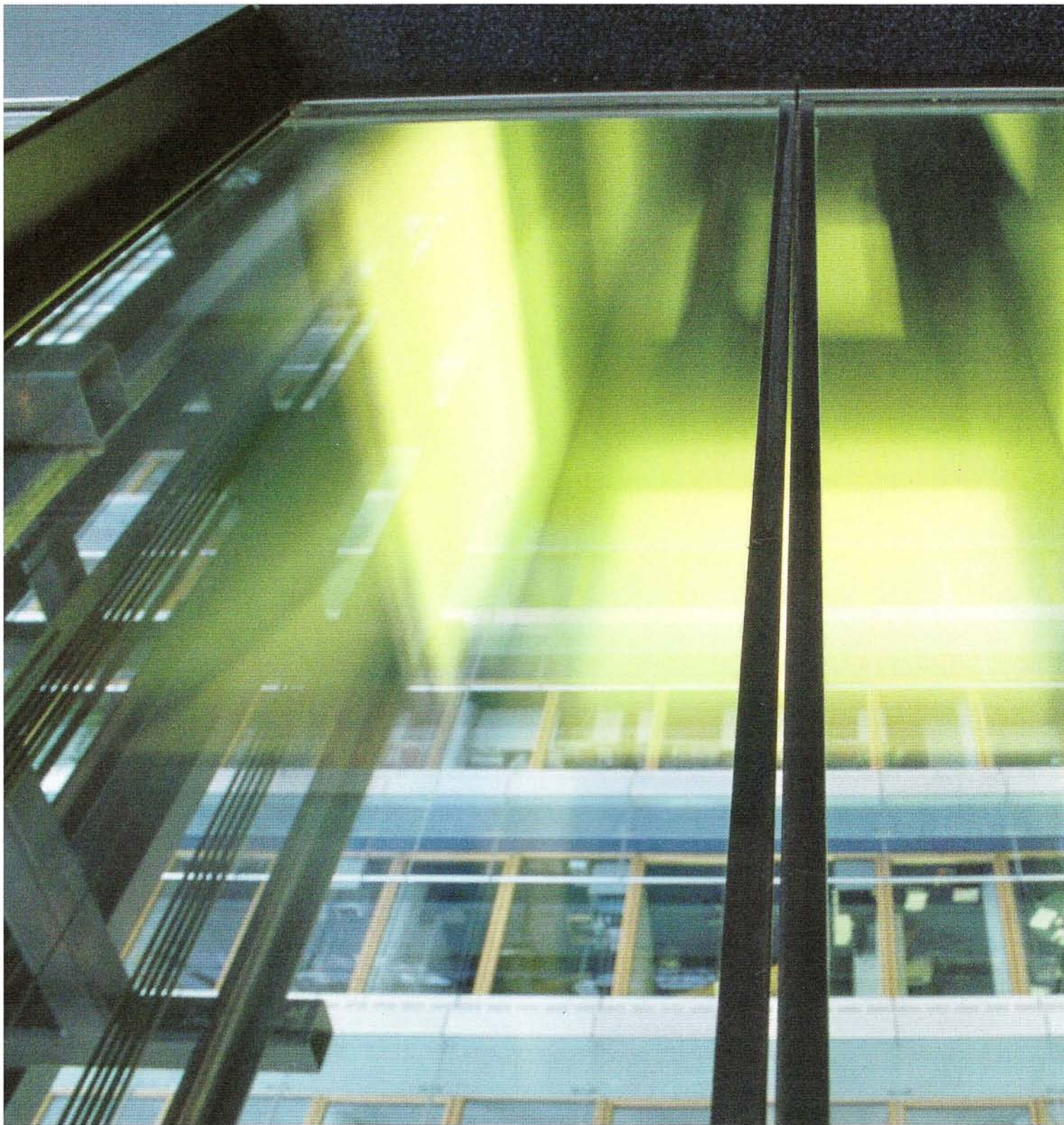
► Spacious brightness

LUXEN provides ampler and brighter space with its higher ceiling when compared to other types of elevators.



► Mini Machine Room

LUXEN brings down construction cost by keeping the machine room and hoistway in accordance due to its gearless traction machine.

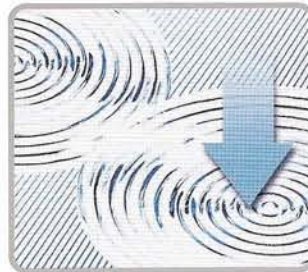


Safe & Fast

LUXEN provides quiet and quick services through analyzing the
in an integrated and constant way.



noises & vibrations



▶ Lowest Noises and Least Vibrations

LUXEN is equipped with advanced permanent magnetic traction machine, thus produces no resonance that brought by gear and cable.



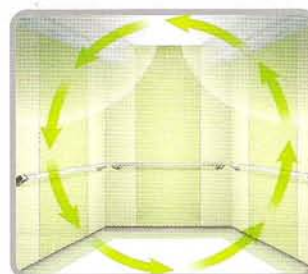
▶ Comfortable and Steady

LUXEN is equipped with permanent magnetic traction machine, which minimizes the vibrations and noises effectively. It causes no blahs resulting from gears articulation.



▶ Harmonious

LUXEN is environment-friendly on the ground that it is not necessary to instead lubricating oil in the traction machine.



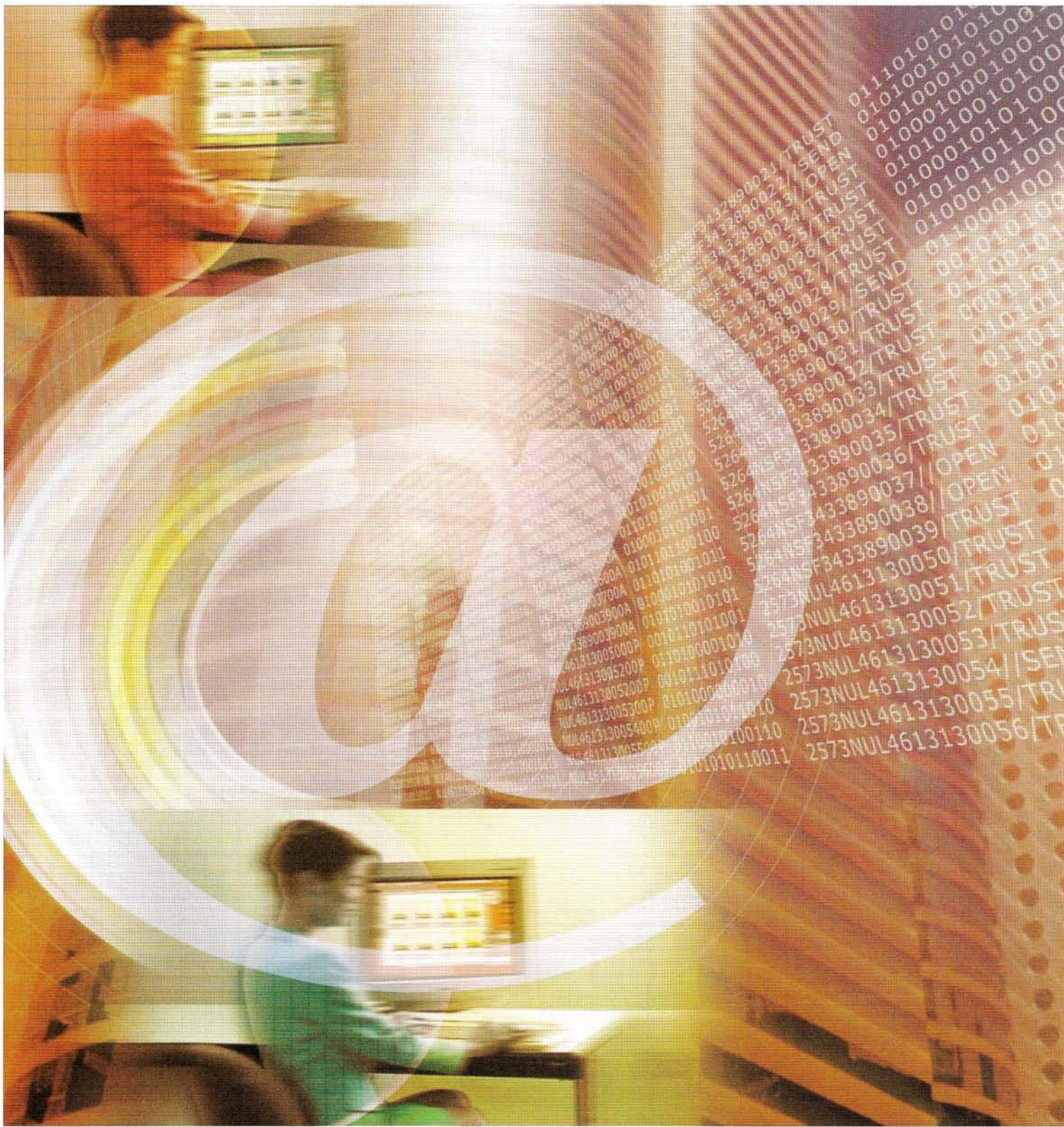
▶ Air Convection

LUXEN is equipped with high-efficiency axial flow to keep the air fresh inside the car.



▶ Energy Feedback Machine (OPTIONAL)

It helps to save 30% of energy when compared to conventional geared traction machine.

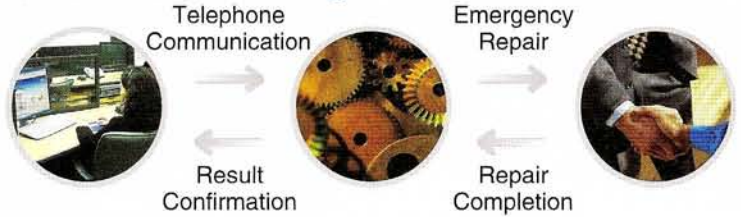


Digital Intelligent Management, Reliable Quick

Our service center provides quick and extraordinary services through our network for 24 hours.



▶ Malfunction Handling



▶ Training



▶ Maintenance Network

▶ Special Features (OPTIONAL)

Remote monitoring system



Thanks to the data acquisition system in the Control Panel, our service center monitors elevators' working condition home and abroad for 24 hours each day of the year through local network and ADSL.





Ceiling:	CD291C(Painted steel+acryl)
Car wall:	Painted steel
Operating panel:	OPP-N240A
Indicator:	PI-D600
Handrail:	HR-01A
Flooring:	PVC



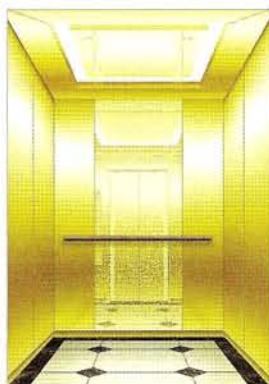
Celling:	C245AS(Painted steel+acryl)
Car wall:	Hairline stainless steel
Operating panel:	OPP-N240A
Indicator:	PI-D600
Handrail:	HR-01A
Flooring:	PVC



Celling:	C726A(Painted steel+acryl)
Car wall:	Mirror etched stainless steel+ Hairline stainless steel(SE-1100)
Operating panel:	OPP-N240A
Indicator:	PI-D600
Handrail:	HR-BAR
Flooring:	PVC



Ceiling:	CD289C(Hairline stainless steel+acryl)
Car wall:	Mirror etched stainless steel
Operating panel:	OPP-D240A
Indicator:	OPP-D240A
Handrail:	HR-01B
Flooring:	PVC



Celling:	C804A (Titanium mirror stainless steel+ Titanium hairline stainless steel)
Car wall:	Titanium hairline stainless steel+ Titanium mirror etched stainless steel
Operating panel:	OPP-N240A
Indicator:	PI-D600
Handrail:	HR-01C
Flooring:	PVC



Celling:	CD519D(Aluminum)
Car wall:	Mirror etched stainless steel+ Hairline stainless steel
Operating panel:	Swing panel
Indicator:	PI-D600
Handrail:	HR-01A
Flooring:	PVC

Entrance Design

HP-01



Landing doors:	Hairline etched stainless steel(SE-800)
Jambs:	Hairline stainless steel(JP-050)
Hall button:	HPB-240
Position indicator:	PI-D610



◇ Marble wall by others

HP-02



Landing doors:	Hairline etched stainless steel(SE-900)
Jambs:	Hairline stainless steel(JP-050)
Hall button:	HPB-240
Position indicator:	PI-D610



HP-03

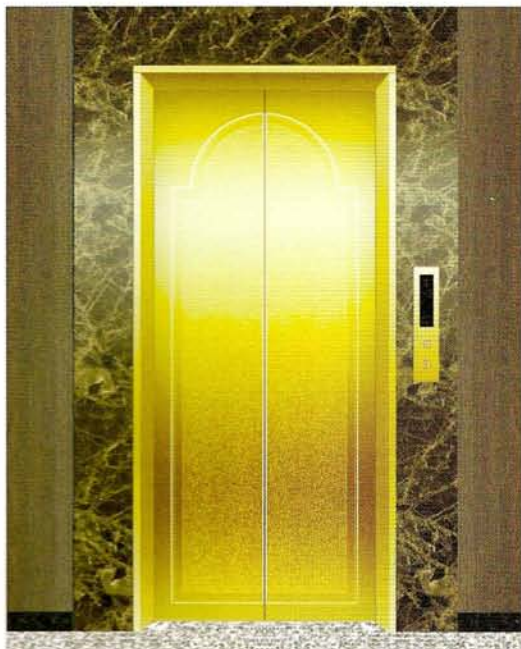


Landing doors:	Hairline etched stainless steel(SE-692)
Jambs:	Hairline stainless steel(JP-100)
Hall button:	HIP-D442B
Position indicator:	HIP-D442B



Entrance Design

HP-04



Landing doors:	Etched hairline stainless steel(SE-1000)
Jambs:	Hairline stainless steel(JP-200)
Hall button:	PI-D600
Position indicator:	HPB-240

HP-06



Landing doors:	Titanium etched hairline stainless steel(SE-1171)
Jambs:	Titanium hairline stainless steel(JP-100)
Hall button:	HIP-D240A
Position indicator:	HIP-D240A

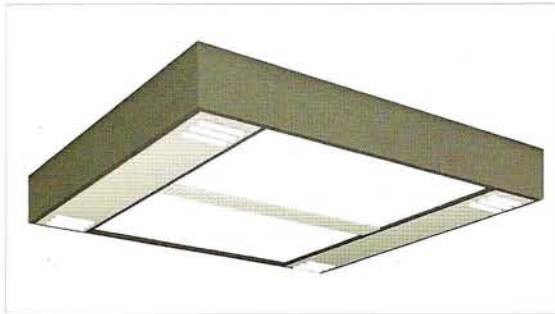
◇ Marble wall by others

HP-05

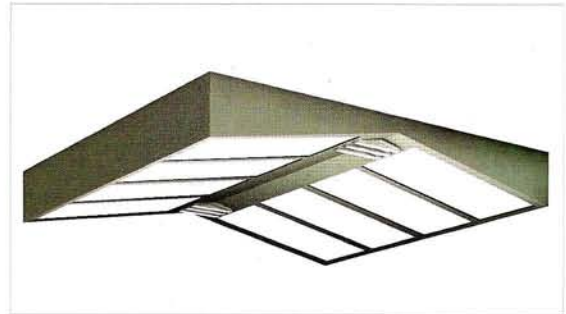


Landing doors:	Titanium mirror etched stainless steel(SE-1171)
Jambs:	Titanium mirror stainless steel(JP-200)
Hall button:	HPB-240
Position indicator:	PI-D600

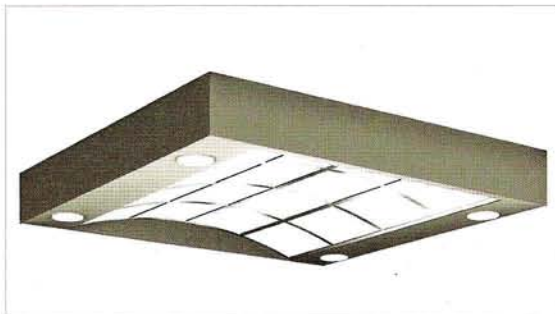
Ceiling



C245AS (Standard)
Material: Painted steel+acryl



C451B (Standard)
Material: Painted steel+acryl



C726A (Standard)
Material: Painted steel+acryl



C421A (Standard)
Material: Stainless steel+acryl



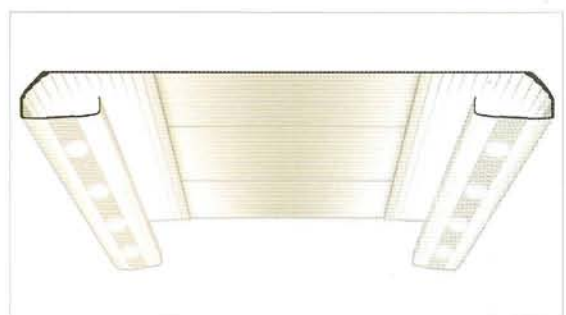
C807A (Optional)
Material: Mirror stainless steel+acryl



C806A (Optional)
Material: Stainless steel+acryl



C804A (Optional)
Material: Titanium mirror stainless steel+
Titanium hairline stainless steel



CD519D (Optional)
Material: Aluminum

Handrail & Flooring



HR-01A One Row



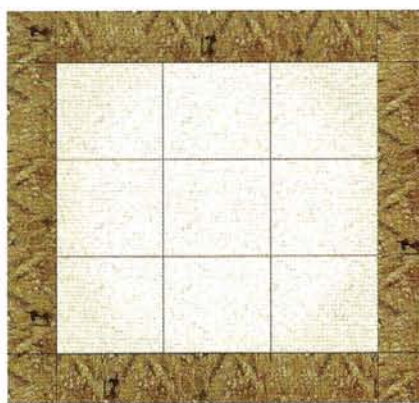
HR-BAR Flat Bar (Optional)



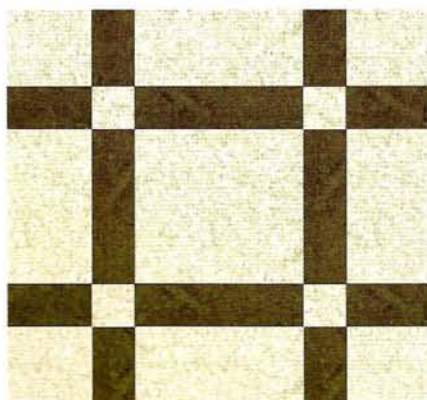
HR-01B One Row (Optional)



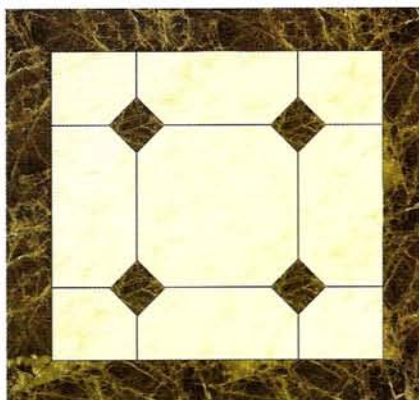
FP-08 (Standard)



FH-01 (Optional)



FH-03 (Optional)



FH-02 (Optional)

Car Operating Panel & Indicator & Hall Lantern



OPP-D131



OPP-D321



OPP-D240A



OPP-N240A



HIP-D131A
(Box type)



HIP-D442B
(Boxless)



HIP-D240A
(Box type)



HPB-442B
(Boxless)



HPB-240
(Box type)



PI-D600



PI-D610



HIP-D240WA
(Box type)



HLS-760
(Optional)



HLS-770
(Optional)



HLS-640
(Optional)



OPP-N240W



A40



A41



A31



A21

◇ Finished product may vary slightly from these prints.

◇ Duplex controlled two elevators could apply and overall style of a two-show wide HIP-D240A Indicator.

Etching Patterns & Paint Colors



BB-10



BB-13



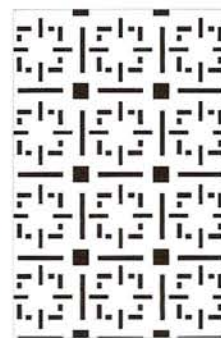
BB-16



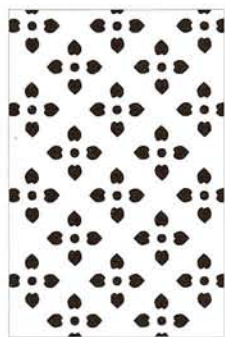
BG-02



BG-12



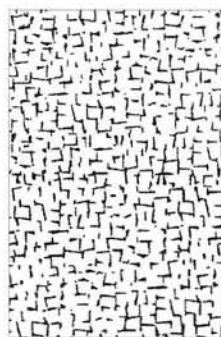
BG-28



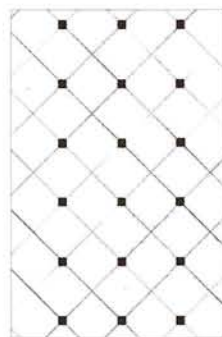
BG-30



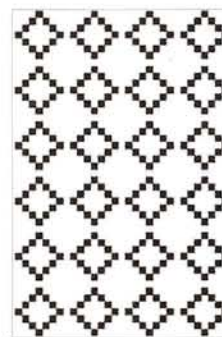
BG-41



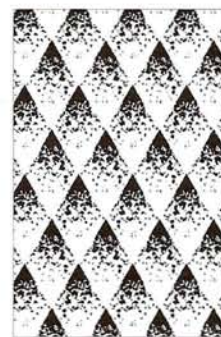
SE1171



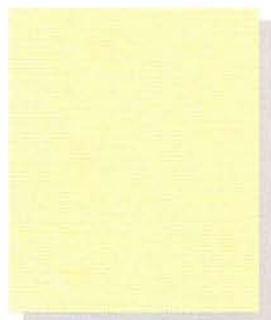
SE1167



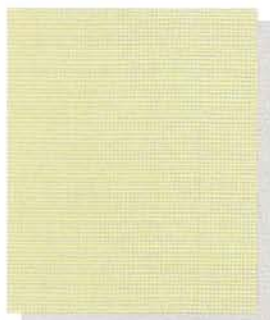
SE1172



KJ62



P-003



P-005



P-017



P-002



P-006



P-007



P-020 gold

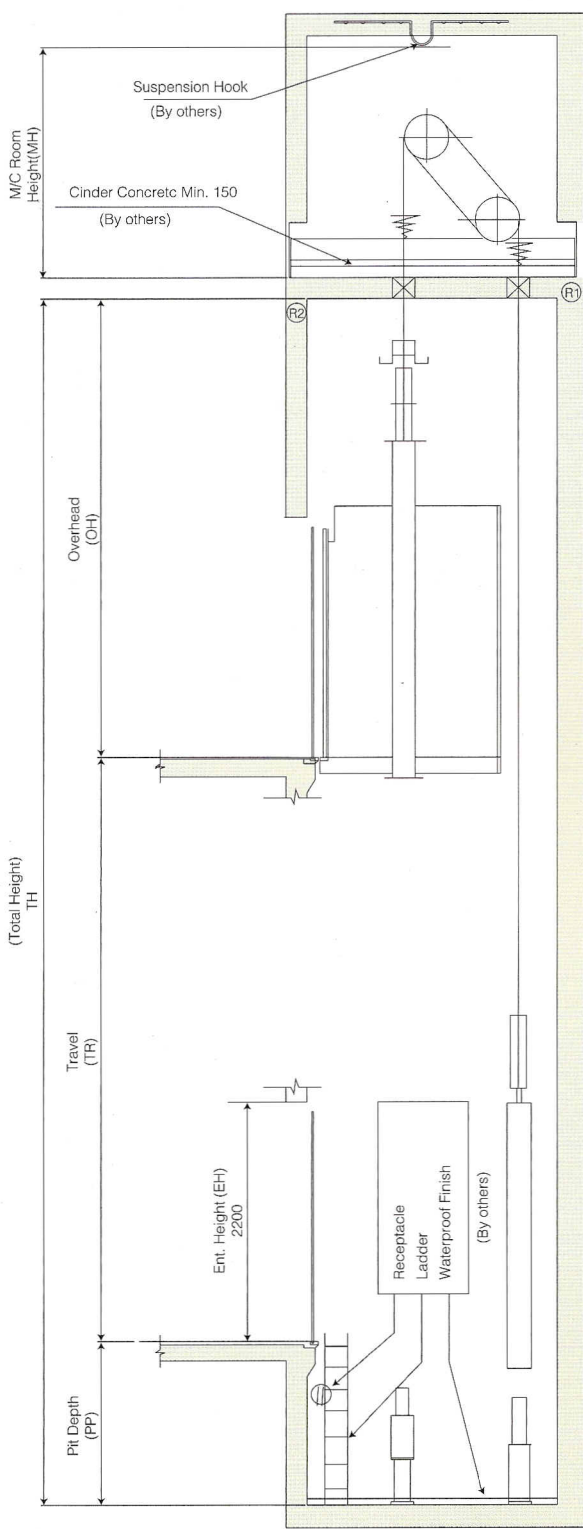


P-021 silver

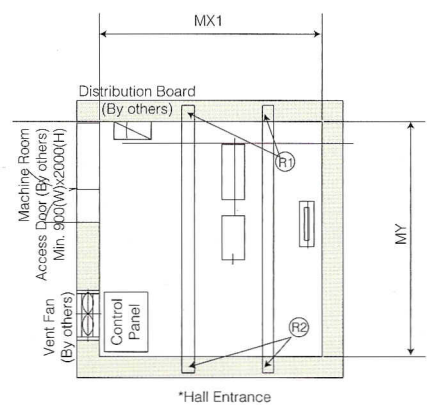
◇ Finished product may vary slightly from these prints.

Hoistway & Machine Room Plan

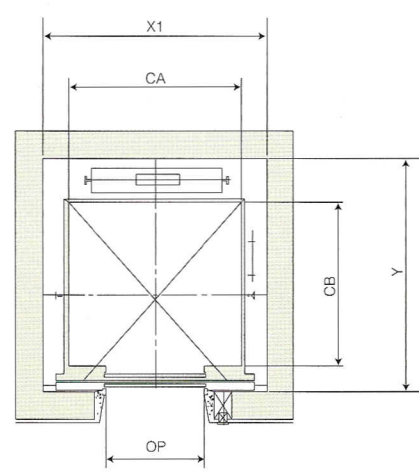
Section & Hoistway



Section & Machine Room



Plan of Hoistway



Specification & Reaction

Unit: mm

Speed (m/min)	Capacity		Clear Opening	Car	Hoistway		M/C Room		M/C Room Reaction	
				Internal	Width	Depth	Width	Depth	kg	
	Persons	kg	OP	CAXCB	X1	Y	MX1	MY	R1	R2
60	8	630	800	1400x1100	1800	1750	1800	1750	4100	2450
	9	680	800	1400x1250	1800	1900	1800	1900	4200	2700
	11	800	800	1400x1350	1800	2000	1800	2000	4550	2800
90	13	900	900	1600x1350	2050	2000	2050	2000	5100	3750
	15	1000	900	1600x1500	2050	2150	2050	2150	5450	4300
105	17	1150	1000	1800x1500	2350	2280	2350	2280	6600	5100
	20	1350	1000	1800x1700	2350	2480	2350	2480	7800	6000
	24	1600	1000	2000x1750	2550	2530	2550	2530	8500	6800
120	11	800	800	1400x1350	2000	2185	2000	2185	11500	6500
	13	900	900	1600x1350	2300	2200	2300	2200	12030	6630
	15	1000	900	1600x1500	2300	2350	2300	2350	12810	6950
	17	1150	1000	1800x1500	2500	2350	2500	2350	13080	7130
	20	1350	1000	1800x1700	2500	2550	2500	2550	14360	7650
	24	1600	1100	2000x1750	2700	2600	2700	2600	15090	8080

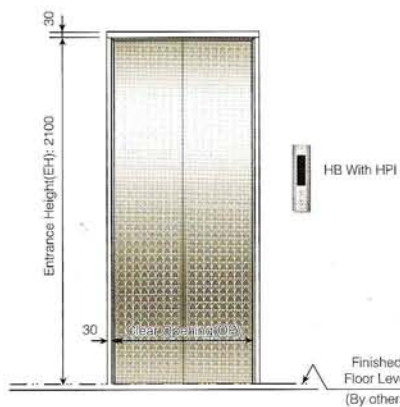
*Note: Above dimensions are based on center opening doors.
For applicable with side opening doors, consult Hyundai.

Unit: mm

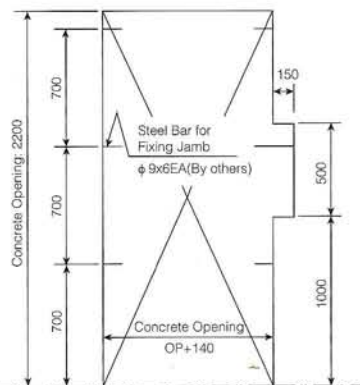
Speed	Overhead	Pit.	M/C Room Height
(m/min)	(OH)	(PP)	(MH)
60	4300	1400	2200
90	4500	1600	2200
105	4600	1700	2200
120	4800	2100	2200

Entrance Layout

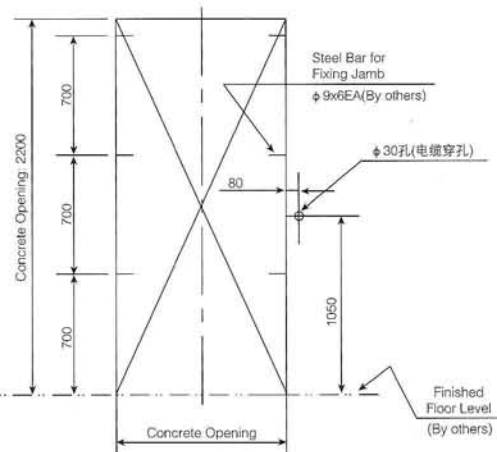
Entrance



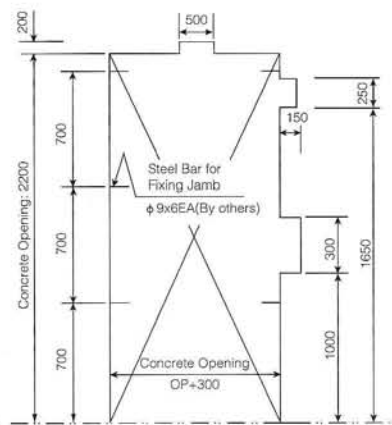
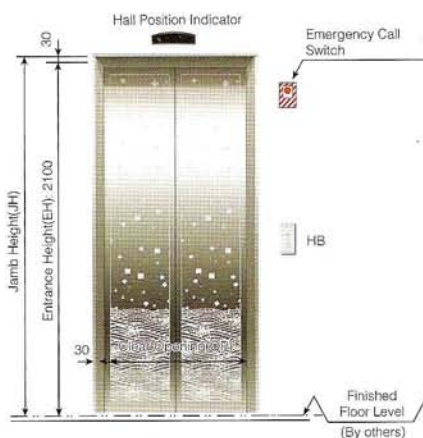
Structural Opening of Entrance



In case of Boxless Type

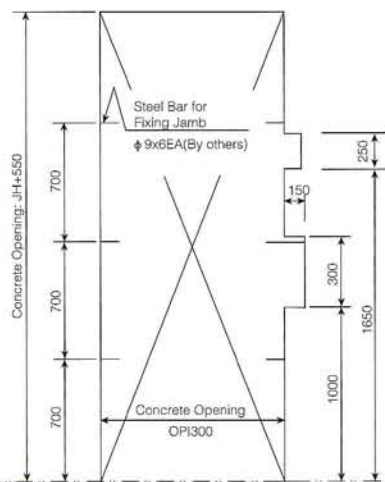
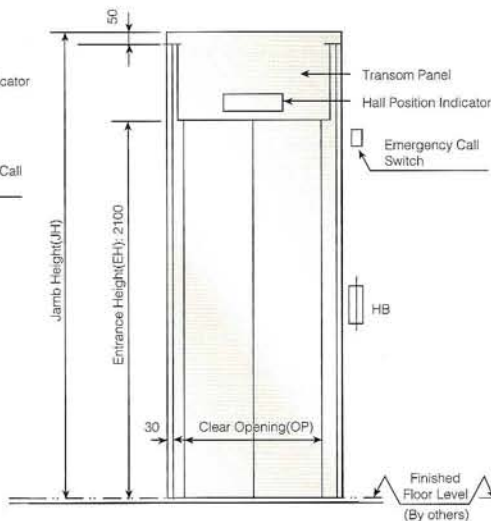
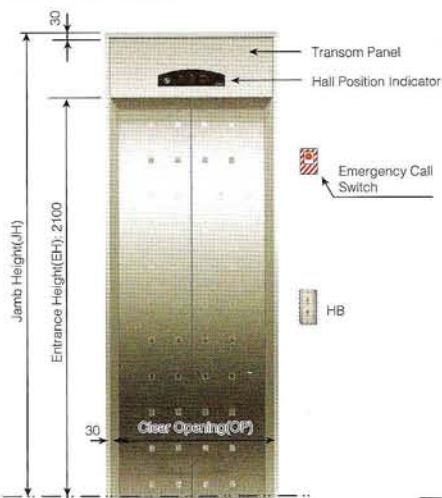


JP050 Type
(Basic)



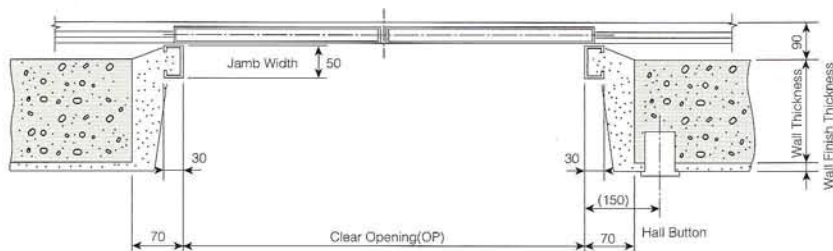
JP100 Type
(Optional)

JP200 Type
(Optional)

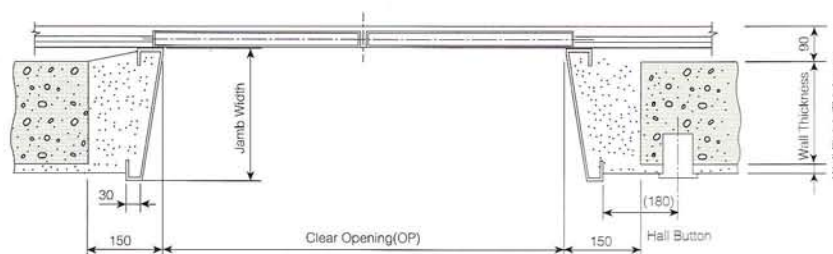


Entrance Layout (Center Opening)

Plan of Entrance

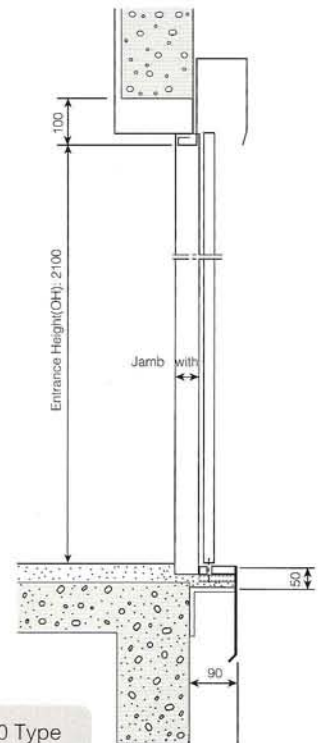


JP050 Type

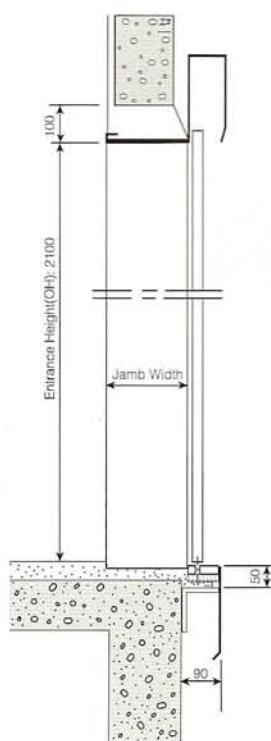


JP100, JP200 Type

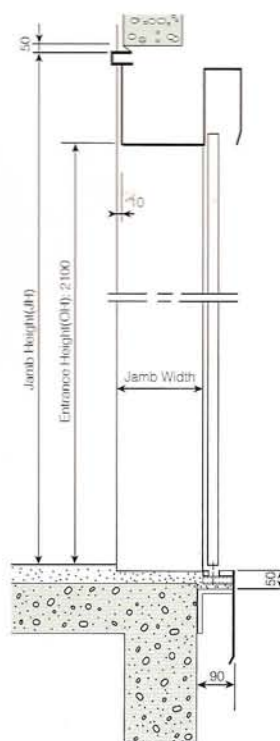
Section Entrance



JP050 Type



JP100 Type



JP200 Type

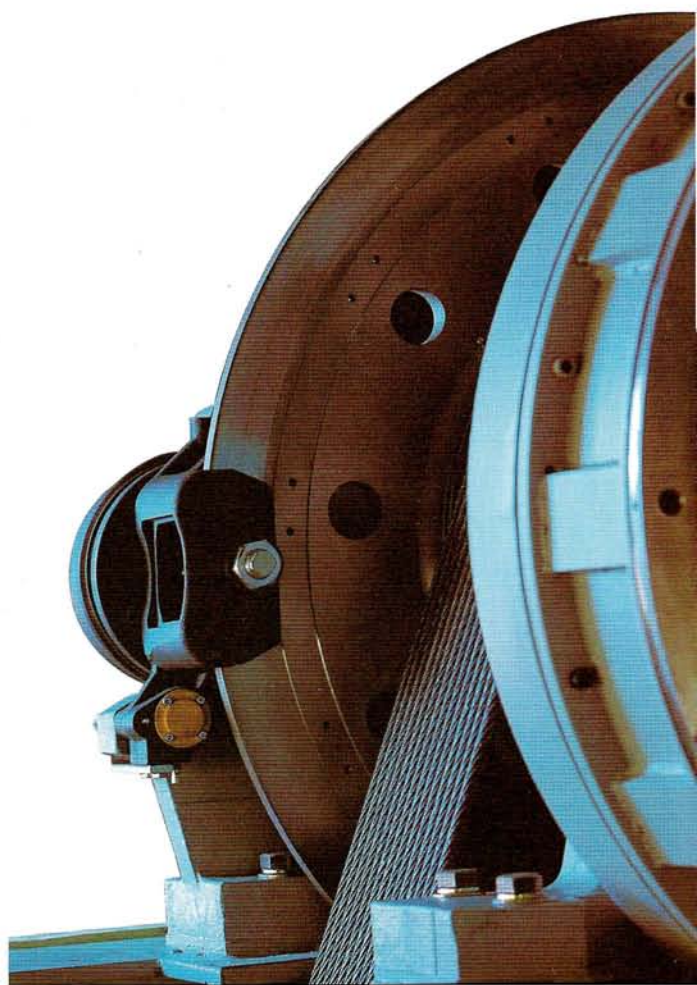
- Building Structure (By other Contractors)
- Wall and Floor Finishing (By other Contractors)

Features	Description	<div> <div></div> Standard <div></div> Optional </div>
standard function	Collective Selective Control	<input checked="" type="radio"/>
	VVVF Inverter Drive	<input checked="" type="radio"/>
	Automatic Slow Leveling	<input checked="" type="radio"/>
	Inspection Operation	<input checked="" type="radio"/>
	Automatic Bypass	<input checked="" type="radio"/>
	Fireman's Emergency Return	<input checked="" type="radio"/>
	Car Arrival Chime	<input checked="" type="radio"/>
	Dot Display Indication	<input checked="" type="radio"/>
	Reversal Car Call Canceling	<input checked="" type="radio"/>
	Car Ventilation Shut Off-Automatic	<input checked="" type="radio"/>
	Car Light Shut Off-Automatic	<input checked="" type="radio"/>
	Overload Holding Stop	<input checked="" type="radio"/>
	Attendant Service	<input checked="" type="radio"/>
	Repeated Door-Close	<input checked="" type="radio"/>
	The counter and the running times	<input checked="" type="radio"/>
optional function	Fault Indication	<input checked="" type="radio"/>
	Emergency Car Lighting	<input checked="" type="radio"/>
	Safety Door Edge	<input checked="" type="radio"/>
	Interphone	<input checked="" type="radio"/>
	Fireman's Emergency Operation	<input type="radio"/>
	Duplex Control	<input type="radio"/>
	Group Control	<input type="radio"/>
	Auxiliary Car Operating Panel	<input type="radio"/>
	False Call Canceling-Car Button Type	<input type="radio"/>
	False Call canceling-Automatic	<input type="radio"/>
	Emergency Landing Device	<input type="radio"/>
	Multi-Beam Protection	<input type="radio"/>
	Automatic Supervisory Function	<input type="radio"/>
	Hall Lantern	<input type="radio"/>
	Door Optical Electricity Protection Device (Safety Ray)	<input type="radio"/>
	Remote Monitoring Device	<input type="radio"/>



Total solutions
for *Movement*

LUXEN
Digital Gearless





SH-C-2007
LUXEN Gearless Elevators
August 2007



Hyundai Elevator Co.,Ltd.

Head Office & Factory

San 136-1, Ami-ri, Bubal-eub, Ichon-shi, Kyonggi-do, Korea

P.C.: 467734

Tel: 82-31-644-5114

Fax: 82-2-745-4227

Seoul Office

1-83 Dongsoong-dong, Jongro-ku, Seoul, Korea

P.C.: 110510

Tel: 82-2-3670-0659

Fax: 82-2-3672-8763/4

Shanghai Hyundai Elevator Mfg. Co.,Ltd.

Head Office & Factory

Liantang Town, Qingpu District, Shanghai, China

P.C.: 201716

Tel: 021-5981-3900

Fax: 021-5981-3903

Shanghai Office

#E-G, 27th fl., Jinxuan Bldg., No.238 Nandan Road(East), Shanghai, China

P.C.: 200030

Tel: 021-6427-8406/9527/5879/9677/7628

Fax: 021-6427-9531/6427-4428/6468-6767

Beijing Office

Room #518, Gaolan Bldg., No.32 Liangmaqiao Road, Chaoyang District, Beijing, China

P.C.: 100004

Tel: 010-6464-3509/6463-2982

Fax: 010-6461-3951